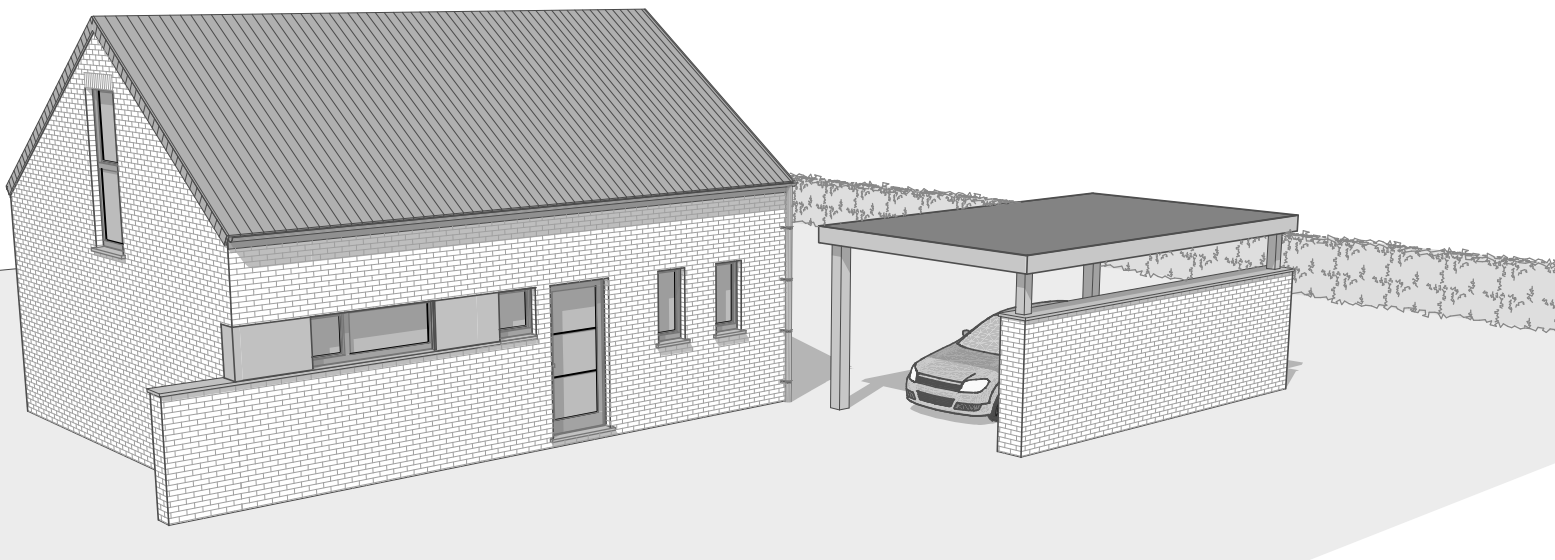
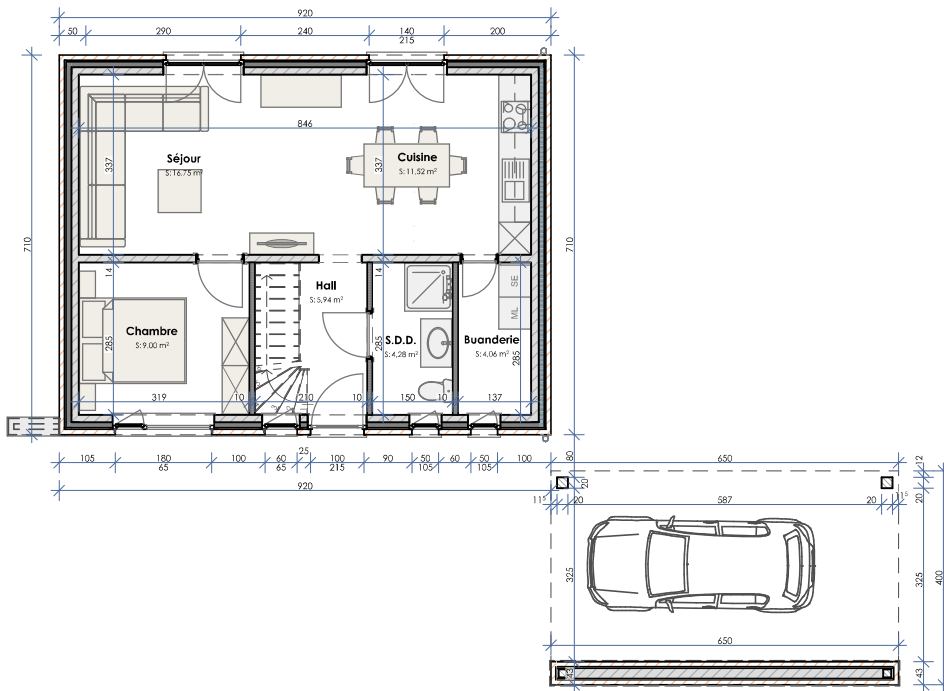
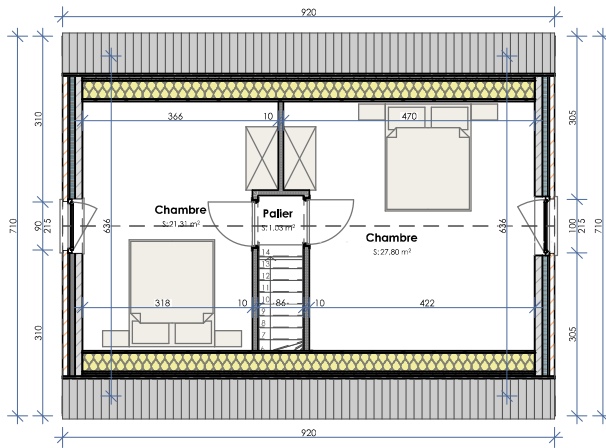


Maison type "Rose"

PERSPECTIVE

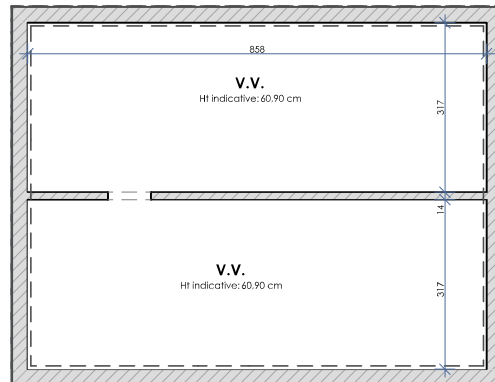






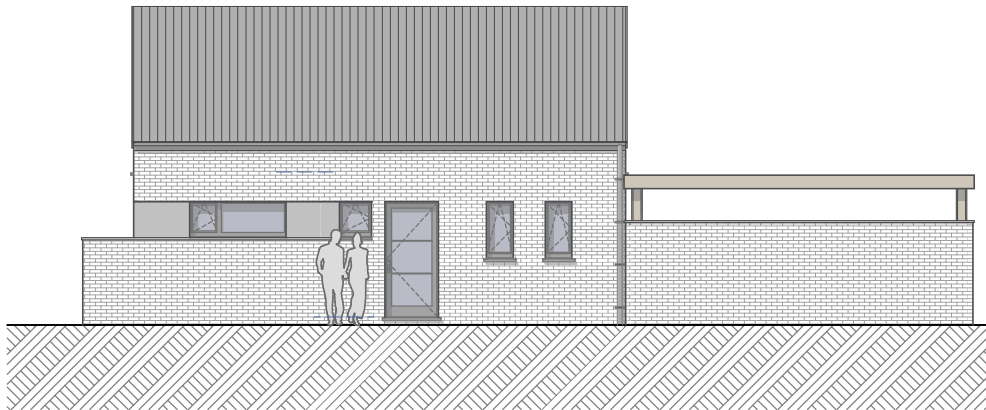
Maison type "Rose"

PLAN DES FONDATIONS



Maison type "Rose"

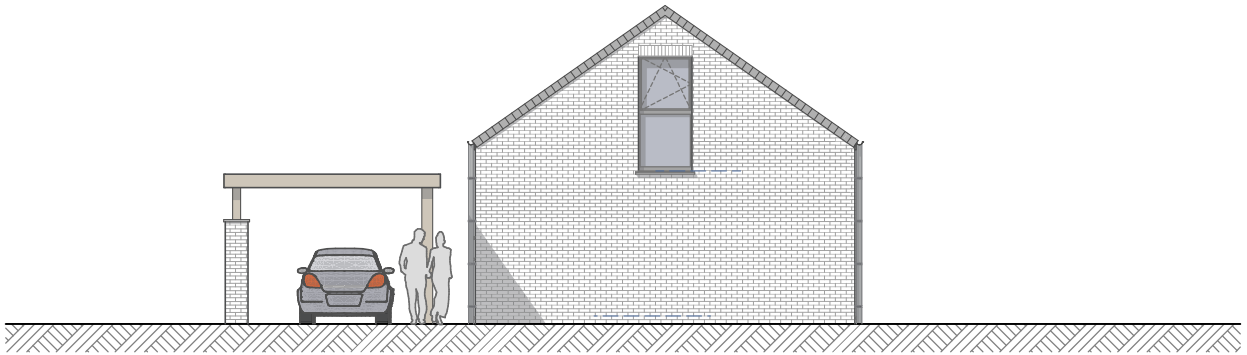
FACADE AVANT



1:100

Maison type "Rose"

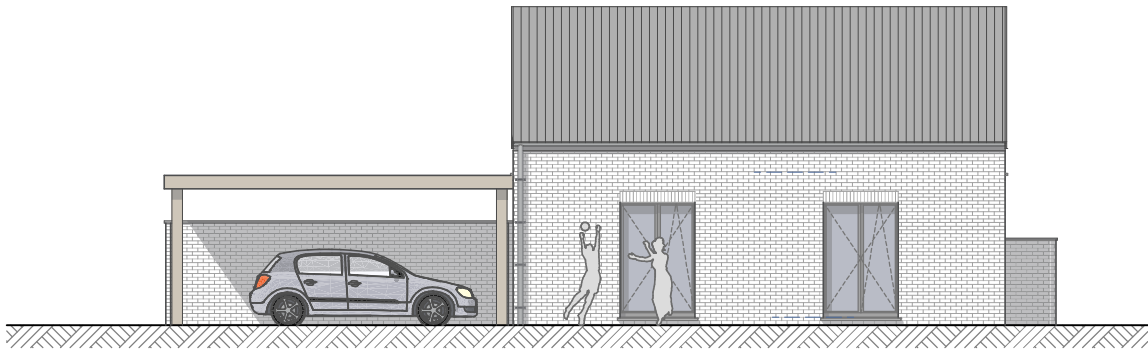
FACADE DROITE



1:100

Maison type "Rose"

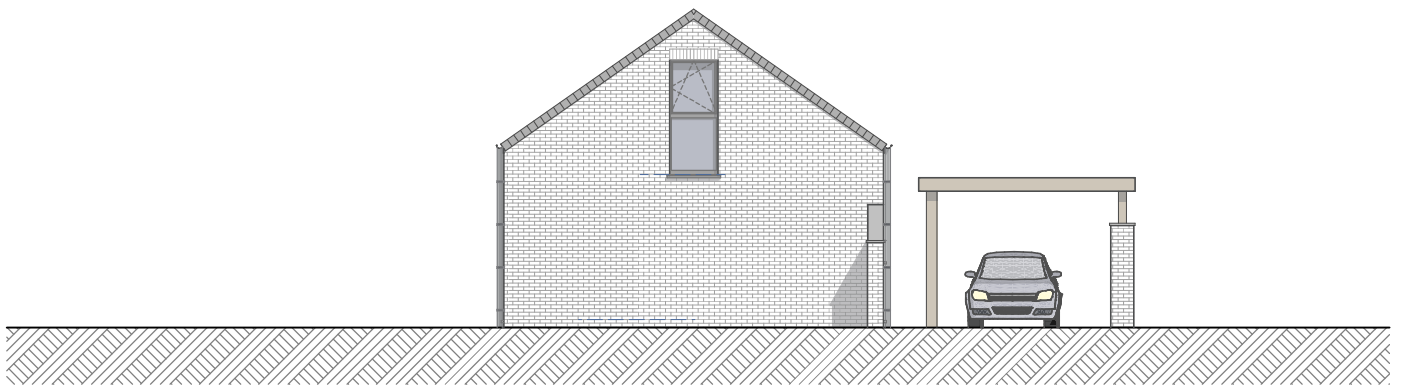
FACADE ARRIERE



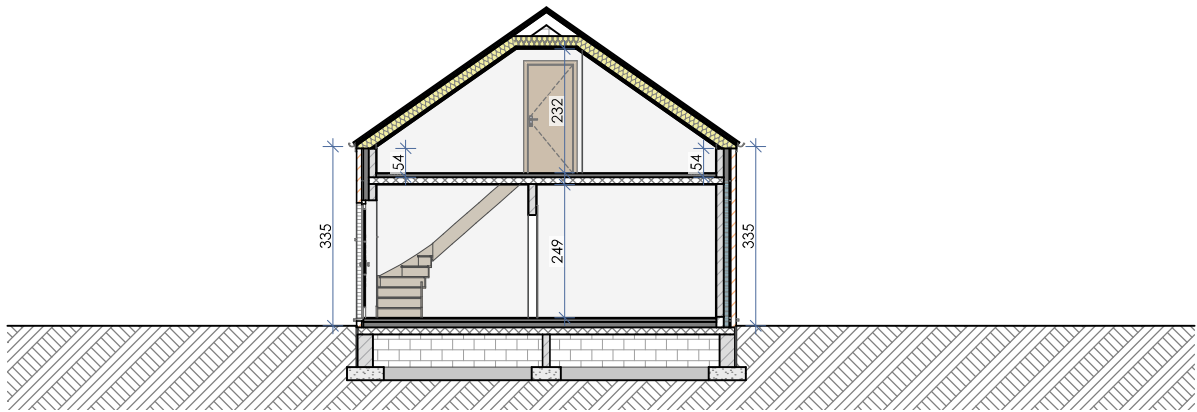
1:100

Maison type "Rose"

FACADE GAUCHE



1:100



Maison type "Rose"

PERSPECTIVES INTERIEURES

